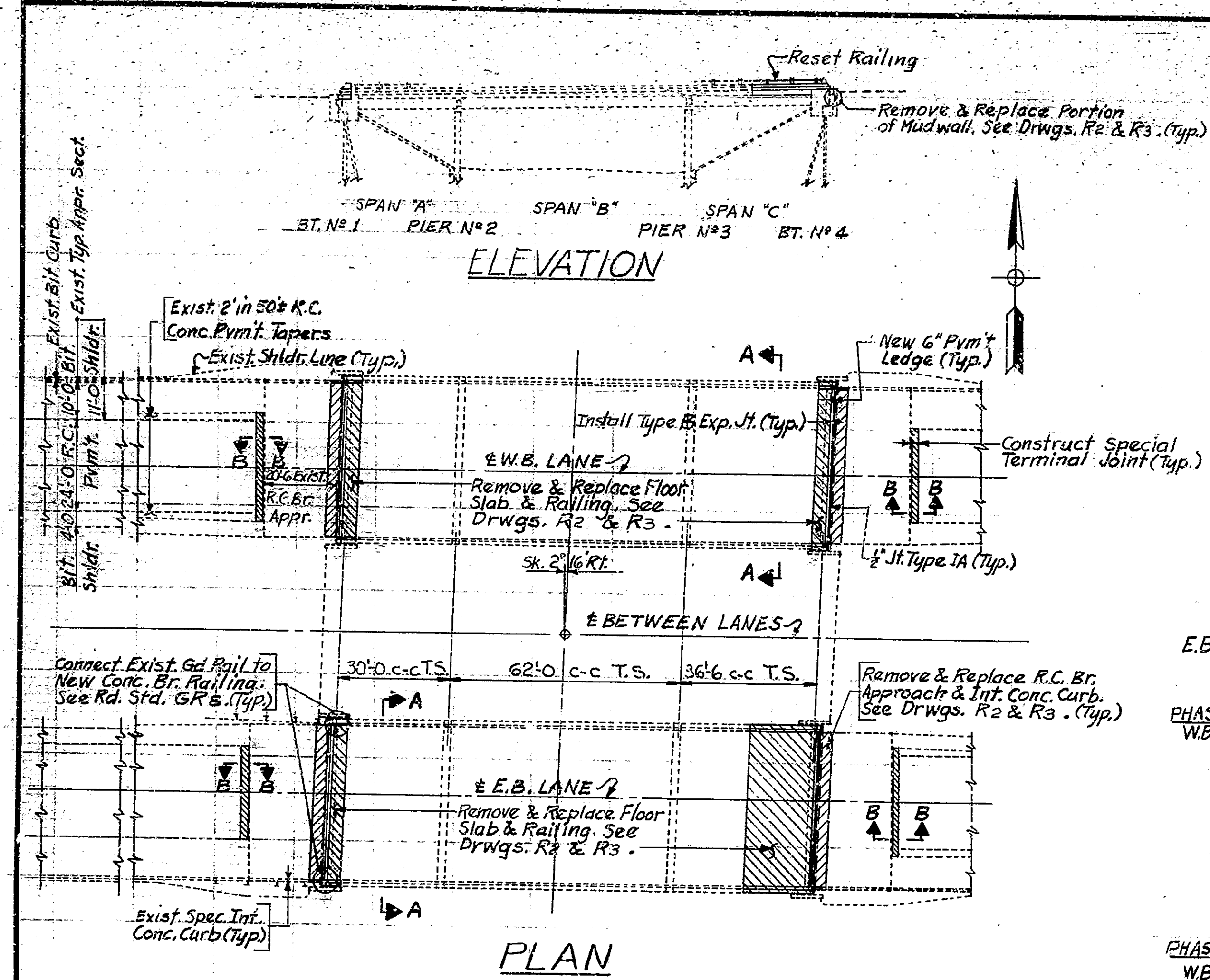


BRIDGES OVER 20' SPAN					
FED. ROAD DIST. NO.	STATE	PROJECT NO.	FISCAL YEAR	SHEET NO.	TOTAL SHEETS
4	IND.		1972	1	16



GENERAL NOTES:

Reinforcing steel covering shall be 1/2 inches in top and 1 inch in bottom of floor slab and 2 inches in all other parts unless noted.

All concrete in structure to be Class "A"

Continuous concrete pours shall be required between construction joints as shown on the detail plans.

Waterproof the back of new mudwalls in accordance with Art. 702.22 of the Specifications.

Bevel forms 1/4 inch under copings and chamfer exposed edges 1/4 inch unless noted.

Only the front face of new mudwalls and the tops of end bent caps to be sealed in accordance with Art. 702.20 of the Specifications.

Where new work is to be fitted to old work, the Contractor shall check all dimensions and conditions in the field and report any errors or discrepancies to the Engineer or assume responsibility for their correctness and the fit of new parts to old.

Plans of the existing structures are on file in the Central Office under Bridge File I-70-7-5039, Contract No. R-601.

See the Special Provisions for items included in this contract.

CONSTRUCTION PROCEDURE

E.B.L. Construct crossovers as shown on *Drwg. R6* When completed close E.B. Structure to traffic and repair structure as shown on the detail plans. When completed open E.B. Lane and begin repair of W.B. Structure.

PHASE I
W.B.L. Close median lanes to traffic as shown on Section A-A, this drawing, and remove portions of R.C. Pavement, Bridge Approach and structures as noted on the detail plans.

Repair floor slab, mudwall and bridge approach and install portions of the Type B Expansion Joints and the Special Terminal Joints.

Repair concrete parapet wall and end post and connect existing guard rail to new concrete end post as required.

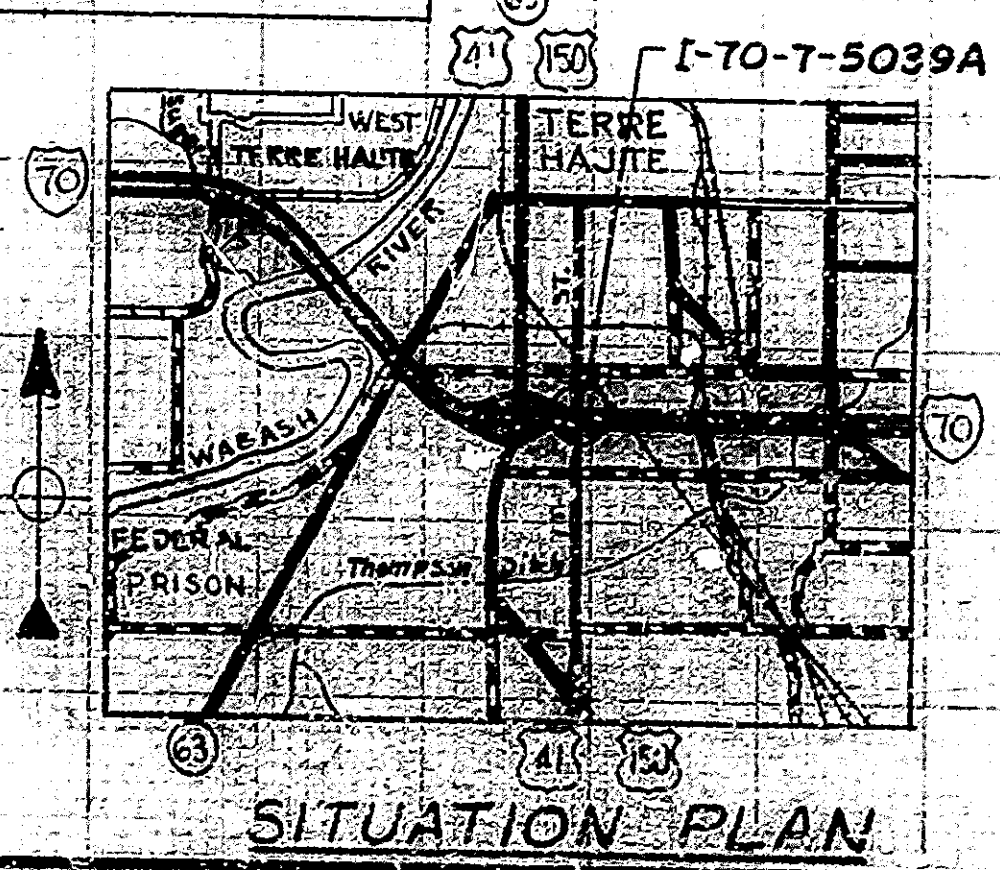
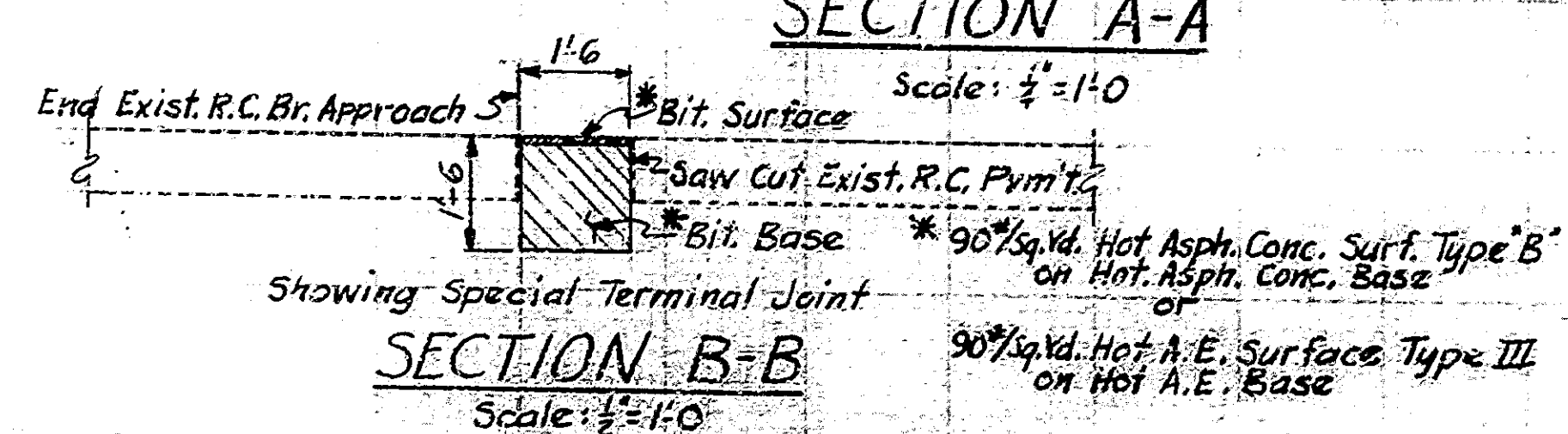
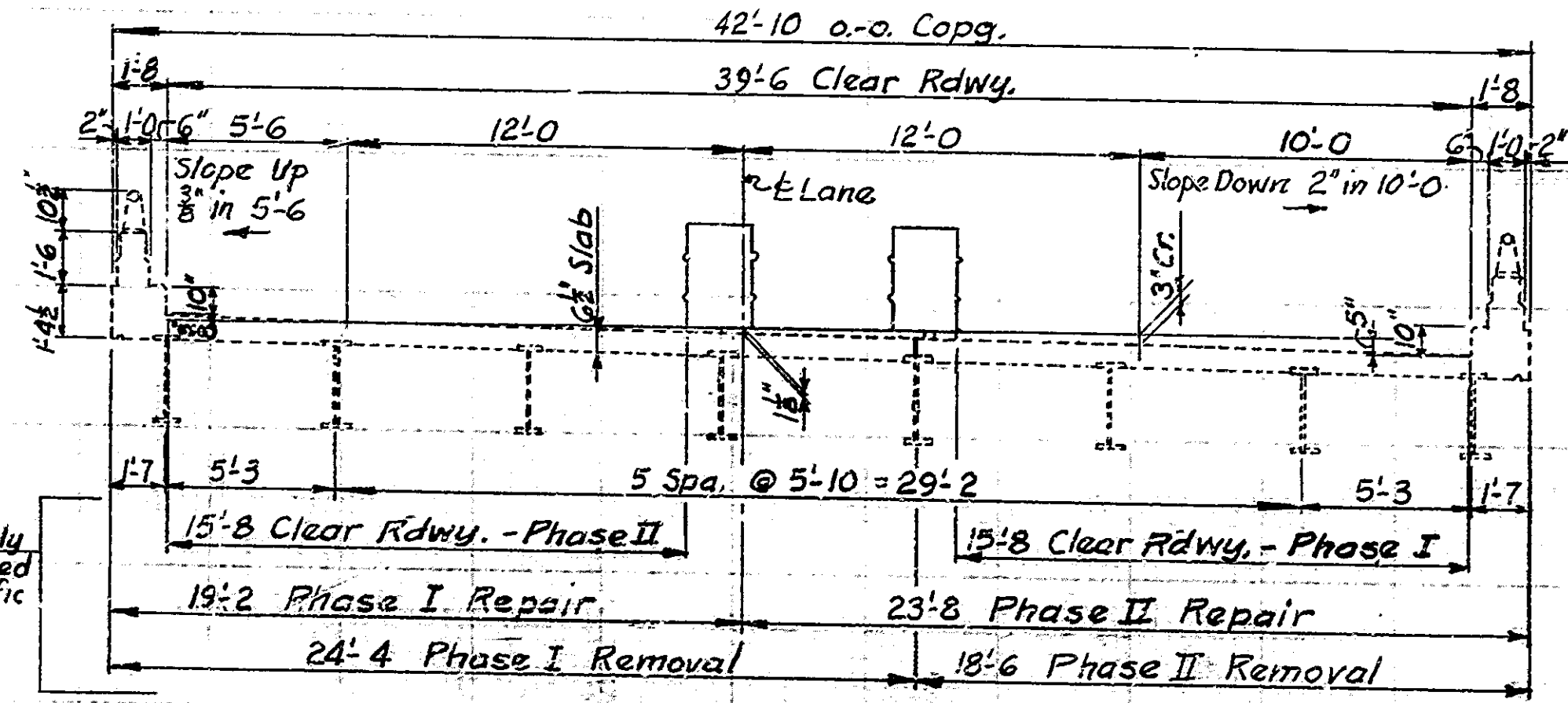
When this work is completed open median lanes to traffic.

PHASE II
W.B.L. Close outside lanes and proceed as above. When completed open both structures to normal traffic. No posting is required. Crossovers to remain in place.

STANDARD DRAWINGS

BR. STD.	RD. STD.	PURPOSE
C1		Reinf. Bar Notes, Bar Bending Details
C3		1/2" Joint Type IA, Type A Constr. Joint, Notch in slab & end of beams.
R1-A		Reset Alum. Railing Type 1, Anchor Bolts
GB8		Gd. Rail Conn. to Conc. Br. Rail
SHEET 1		Std. Detour Signs
SHEET 2		Std. Detour Signs
SHEET 3		Std. Detour Signs
SHEET 4		Std. Detour Signs
SHEET 5		Sign Design Details
ME2		Pipe End Sections

INDEX			
SHEET NO.	DESIGNATION	SUBJECT	DATE
1	R1	TITLE SHEET, INDEX & GENERAL PLAN	
2	R2	DETAILS	
3	R3	DETAILS & BILL OF MATERIALS	
4	R4	TYPE B EXPANSION JOINT DETAILS	
5	R5	CROSSOVER DETAILS, MISCELLANEOUS DETAILS & ESTIMATE OF QUANTITIES	
6	BR. STD. C1	MISCELLANEOUS DETAILS	R. 6-1-72
7	BR. STD. C3	MISCELLANEOUS DETAILS	R. 6-1-72
8	BR. STD. R1-A	ALUMINUM RAILING DETAILS	R. 1-22-63
9	RD. STD. GB8	STEEL BEAM GUARD RAIL	R. 1-4-71
10	RD. STD. SHEET 1 DET.	STANDARD DETOUR SIGNS	A. 4-72
11	RD. STD. SHEET 2 DET.	STANDARD DETOUR SIGNS	A. 4-72
12	RD. STD. SHEET 3 DET.	STANDARD DETOUR SIGNS	A. 4-72
13	RD. STD. SHEET 4 DET.	STANDARD DETOUR SIGNS	A. 4-72
14	RD. STD. SHEET 5 DET.	SIGN DESIGN DETAILS	A. 4-72
15	RD. STD.	SPECIAL SIGNS	R. 7-1-71
16	RD. STD. ME2	MISCELLANEOUS STANDARDS	R. 10-1-69



APPROVED: 6-21-72 DATE
N.W. Stewart
 CHIEF HIGHWAY ENGINEER
 INDIANA STATE HIGHWAY COMMISSION

TITLE SHEET, INDEX & GENERAL PLAN

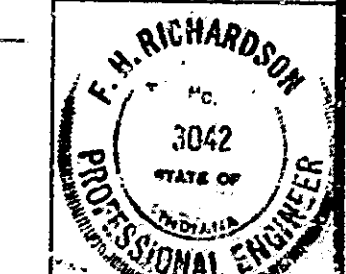
TWIN STRUCTURES
 REPAIRS TO CONTINUOUS STEEL BEAM BRIDGES
 3 SPANS: 30'-0", 62'-0", 36'-6" SK. 2" 1/4" RT. 39'-6" CL. RDWY. + 2 @ 6" CURBS
 ON INTERSTATE 70 OVER SEVENTH ST.

INDIANA STATE HIGHWAY COMMISSION
 VIGO COUNTY

SCALE: 1/4" = 1'-0" UNLESS NOTED DATE: JUNE 20, 1972

RECOMMENDED FOR APPROVAL: *F. H. Richardson*

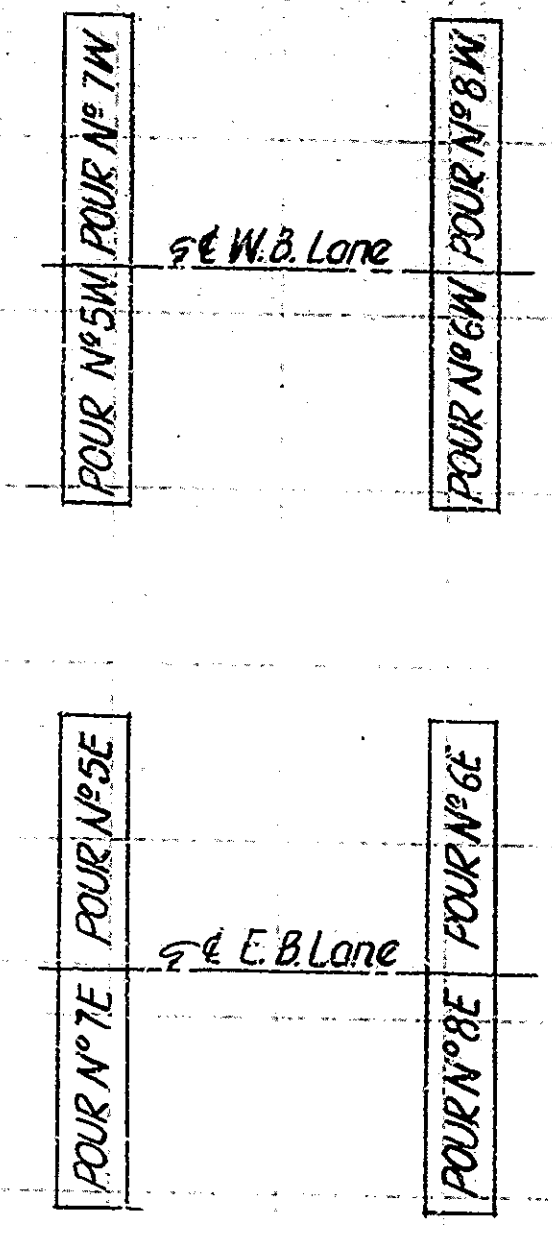
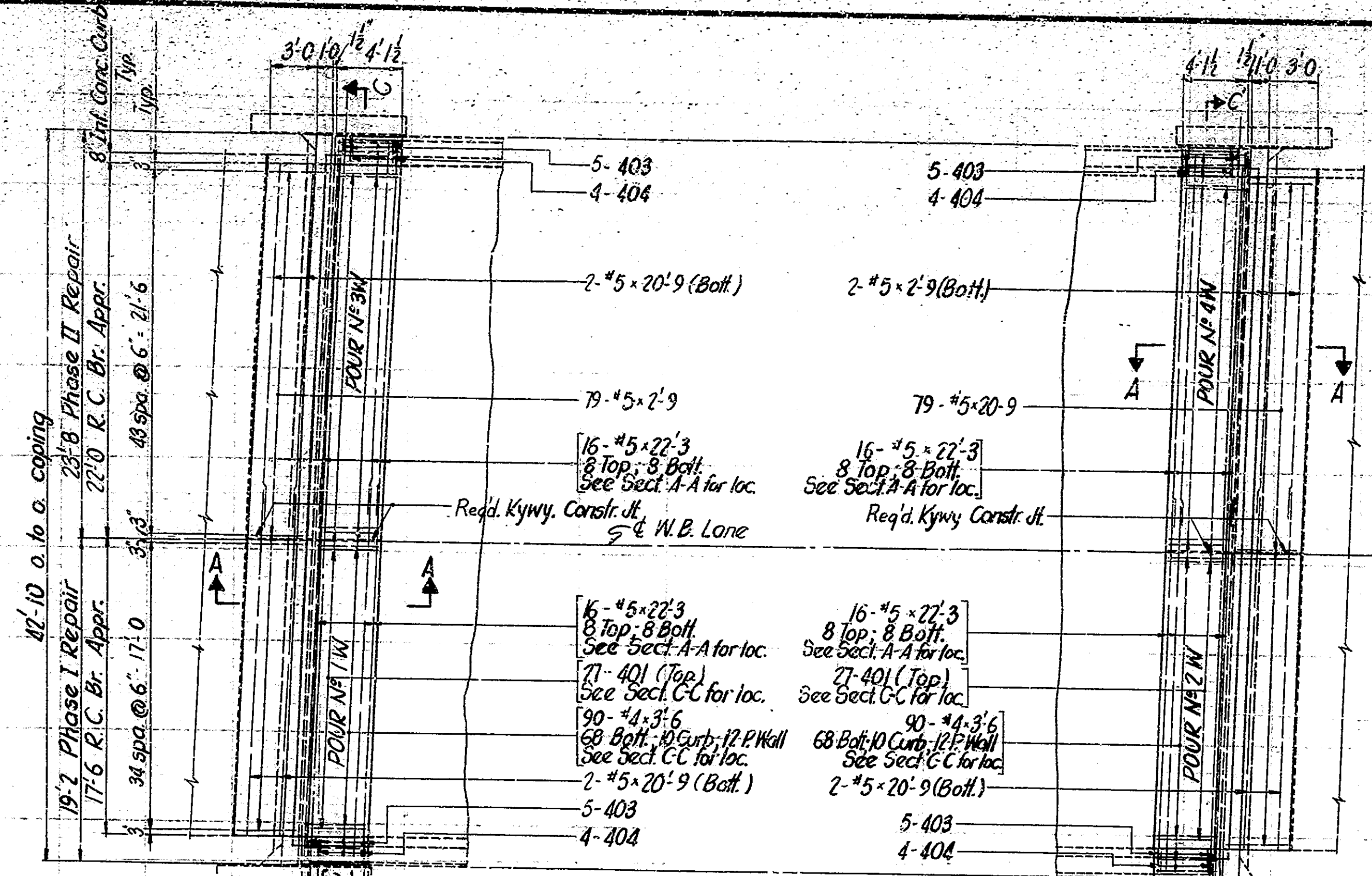
DRAWING: R1 OF 5
 PROJECT: 3042
 CONTRACT NO. M 9115
 BRIDGE FILE: I-70-7-5039A



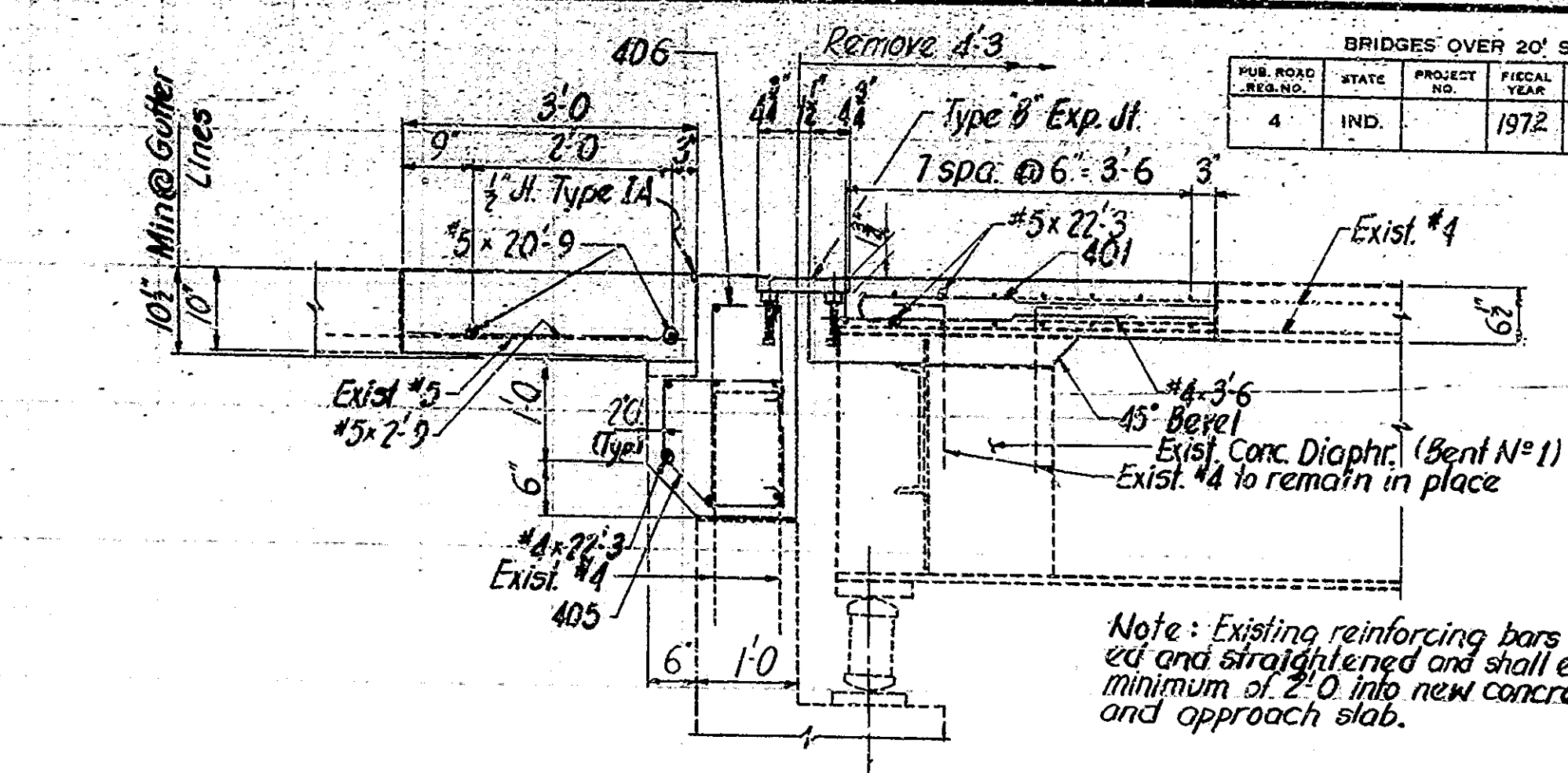
DESIGNED: CKD
 DRAWN: J.A. & B.T. CKD
 TRACED: CKD

INDIANA STATE HIGHWAY COMMISSION
 STANDARD SPECIFICATIONS DATED
 1971 TO BE USED WITH THESE PLANS

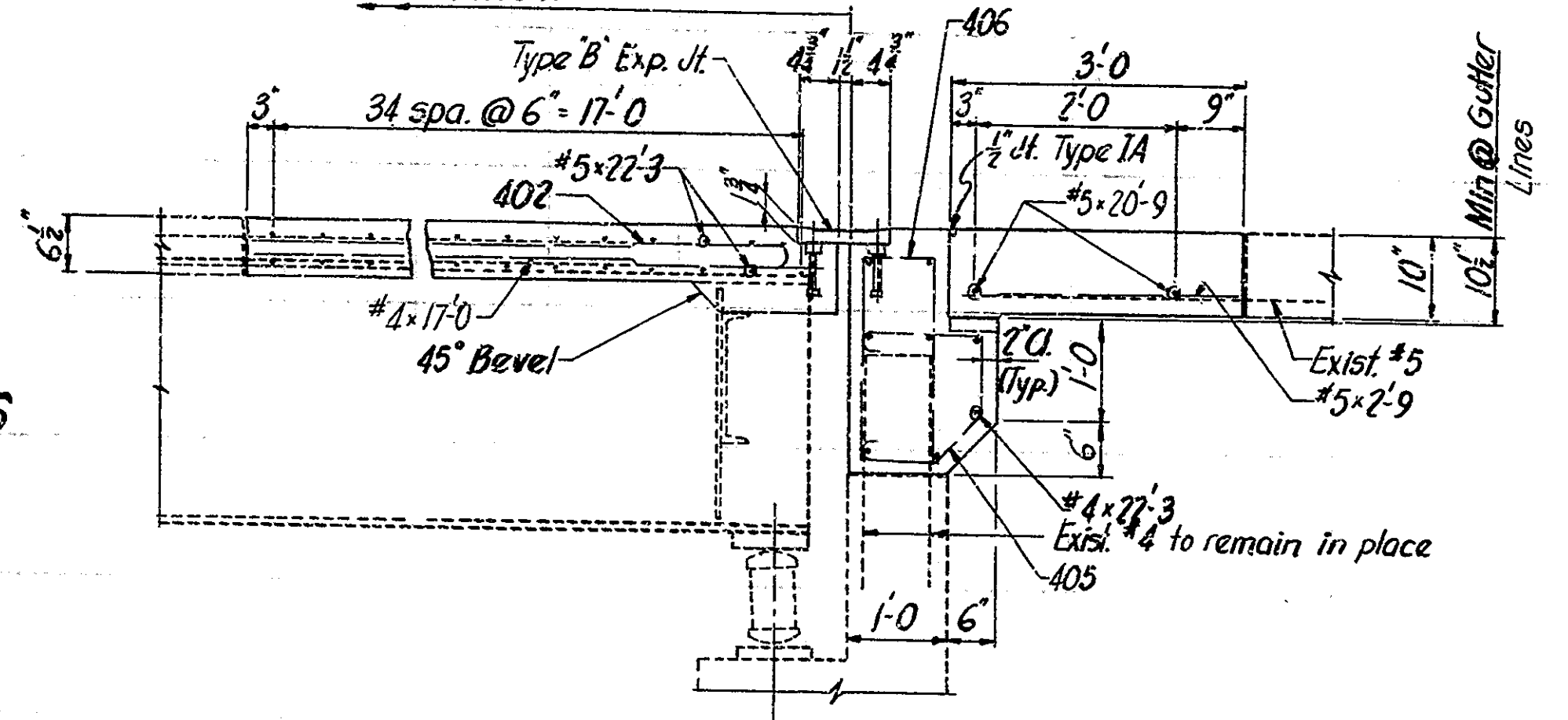
BRIDGES OVER 20' SPAN					
MUR. ROAD DIST. NO.	STATE	PROJECT NO.	FISCAL YEAR	SHEET NO.	TOTAL SHEETS
4	IND.		1972	2	16



POUR DIAGRAM FOR MUDWALLS

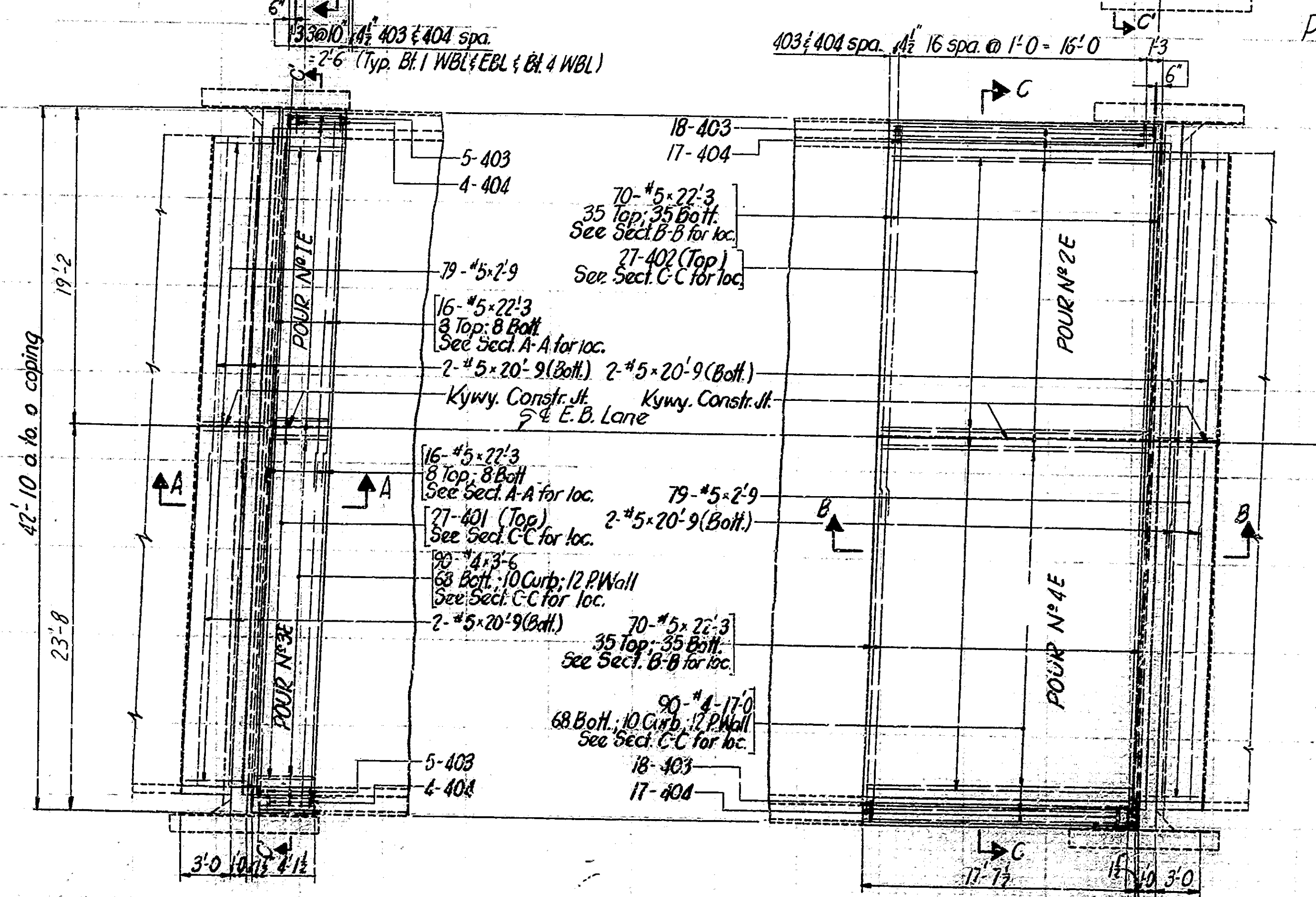


SECTION A-A
Scale: 3/4"=1'-0"

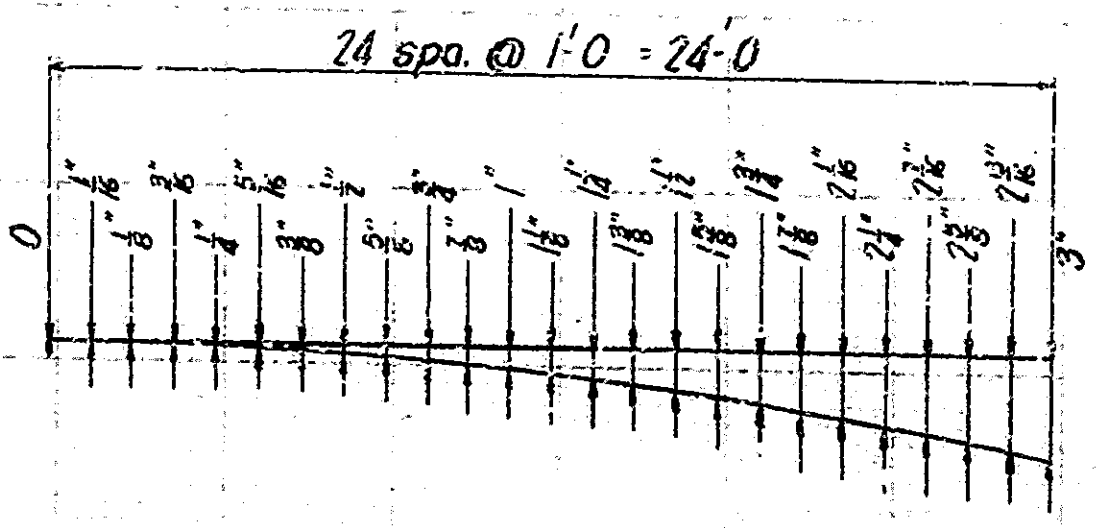


SECTION B-B
Scale: 3/4"=1'-0"

Notes:
 For Reinforcing Bar Notes, see Br. Std. G.
 For General Notes and Construction Procedure, see Drwg. R1.
 Concrete forms shall not be blocked against the expansion end of the structural steel in making any pours adjacent to steel spans.
 For details of new railing post Anchor Bolts and resetting of railing, see Br. Std. A. Cost of Anchor Bolts to be included in the item "Railing Reset".
 For Section C-C, additional details and Bill of Materials, see Drwg. R3.
 All construction joints in E.B. Structure are optional. The Contractor may change the width of pours, sequence of pours, or location of construction joints, subject to the approval of the Engineer. Construction joints in W.B. Structure are required.



FLOOR PLAN
Scale: 3/16"=1'-0"



PAVEMENT OFFSETS FOR 24'

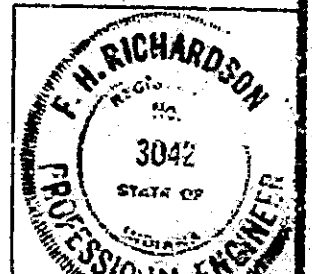
DETAILS

INDIANA STATE HIGHWAY COMMISSION

SCALE:- AS NOTED DATE:- JUNE 20, 1972

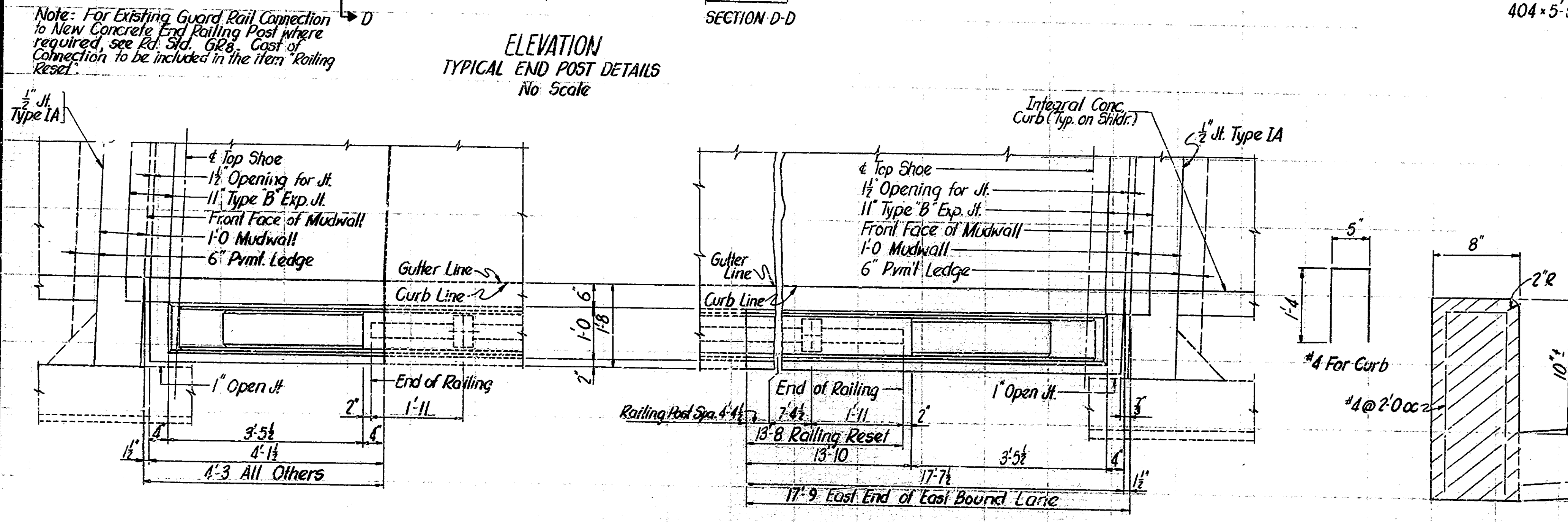
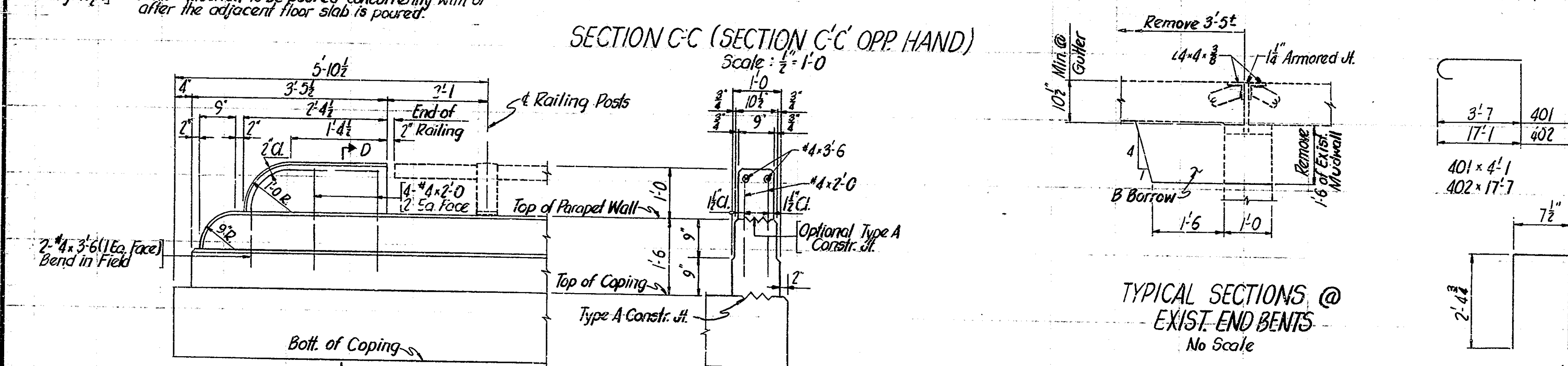
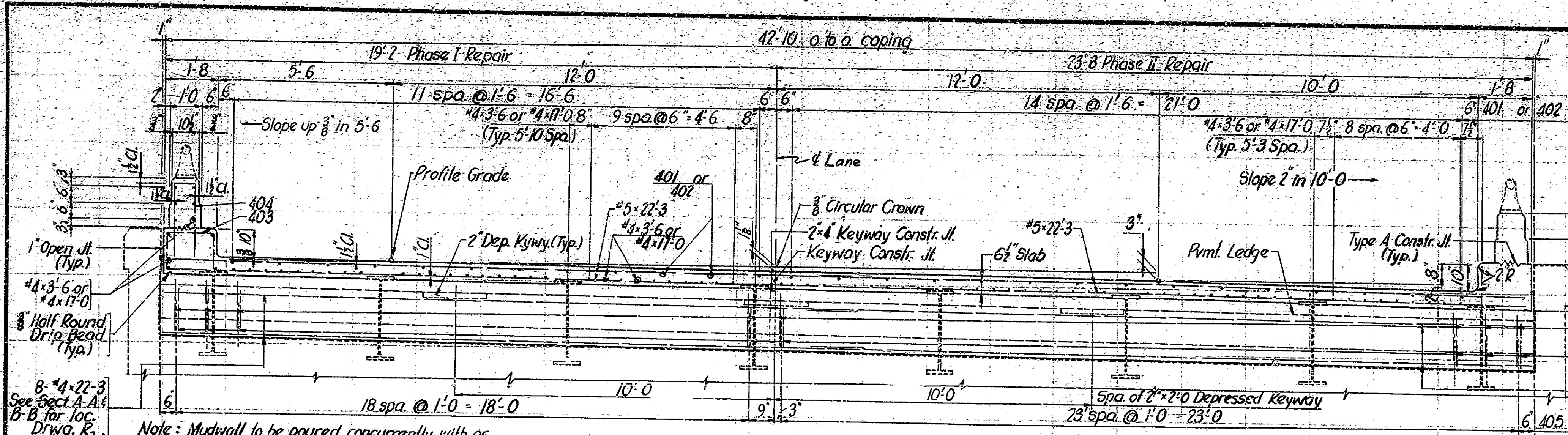
RECOMMENDED FOR APPROVAL: *F. H. Richardson*

DRAWING:- R2 OF 5
 PROJECT:-
 CONTRACT NO. M 9115
 BRIDGE FILE:- I-70-7-5039A



DESIGNED: CKD
 DRAWING: CKD
 TRACED: CKD

BRIDGES OVER 20' SPAN					
PUB. ROAD	STATE	PROJECT NO.	FISCAL YEAR	SHEET NO.	TOTAL SHEETS
4	IND.		1972	3	16



BILL OF MATERIALS FOR E.B. & W.B. LANES

REINFORCING STEEL			
SIZE MARK	NO. BARS	LENGTH	WEIGHT (LBS.)
#5	236	22'-3"	6,477
401	81	11'-1"	
402	27	17'-7"	
403	66	3'-5"	
404	59	5'-5"	
405	172	4'-3"	
406	172	4'-10"	
#4	62	22'-3"	
#4	30	17'-0"	
#4	278	3'-6"	
#4	16	2'-0"	
TOTAL #4			4,587
TOTAL STEEL			10,064

CONCRETE	
CLASS 'A' IN SUPERSTR.	
POUR NR 1 W	2.1 Cys.
POUR NR 2 W	2.0 Cys.
POUR NR 3 W	2.6 Cys.
POUR NR 4 W	2.4 Cys.
POUR NR 1 E	2.1 Cys.
POUR NR 2 E	2.8 Cys.
POUR NR 3 E	2.5 Cys.
POUR NR 4 E	2.5 Cys.
TOTAL CLASS 'A' IN SUPERSTR.	

CONCRETE RAILING	
6 @ 0.25 Cu. Yds.	1.5 Cys.
2 @ 0.95 Cu. Yds.	1.9 Cys.
TOTAL CONCRETE RAILING	
3.4 Cys.	

MISCELLANEOUS	
Type B Expansion Jt. (4 @ 42.2 L.Ft.)	169 L.Ft.
Railing Reset (2 @ 13.2 L.Ft.)	27.3 L.Ft.

BILL OF MATERIALS FOR APPROACH PAVEMENT

REINFORCING STEEL			
SIZE MARK	NO. BARS	LENGTH	WEIGHT (LBS.)
#5	16	20'-9"	
#5	316	2'-9"	
TOTAL #5 & TOTAL STEEL			1,253

MISCELLANEOUS	
Concrete Pavement Reinforced (10')	53.5 Cys.
Integral Concrete Curb (4 @ 3.0 L.Ft.)	12.5 Cys.

Notes:
 For location of Section C-C, additional details and notes, see Drwg. R₂.
 For reinforcing bar notes, see Br. Std. C₁.
 For 1/2" Joint Type IA and Constr. Jt. Type A, see Br. Std. C₃.

DETAILS & BILL OF MATERIALS

INDIANA STATE HIGHWAY COMMISSION

SCALE: AS NOTED DATE: JUNE 20, 1972

RECOMMENDED FOR APPROVAL: *F.H. Richardson*

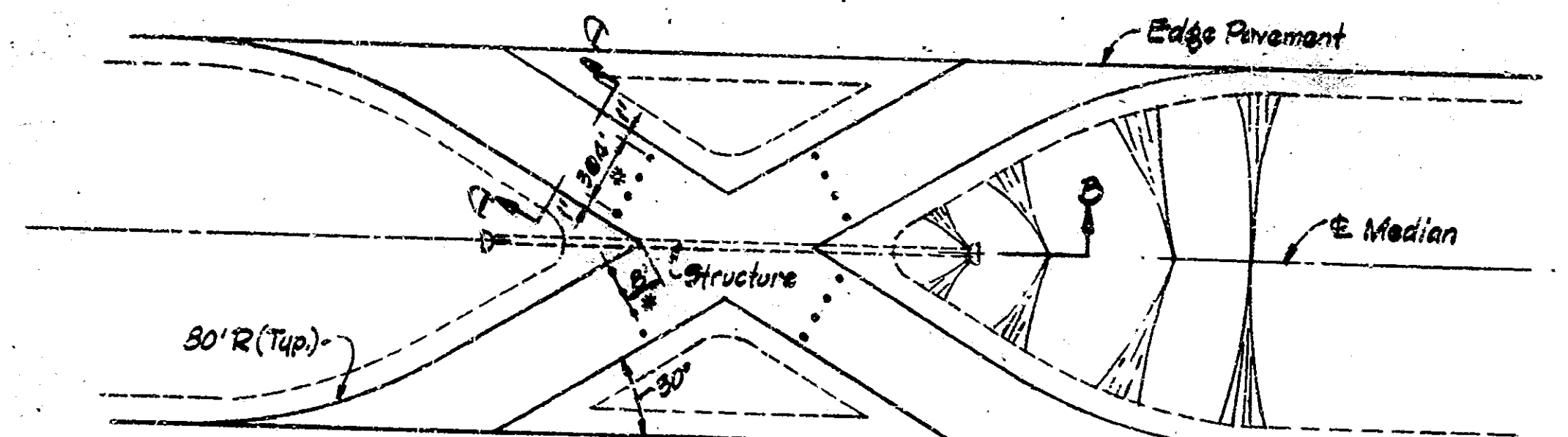
DRAWING: R3 OF 5
 PROJECT: 3042
 CONTRACT NO. M 9115
 BRIDGE FILE: 1-70-7-5039A



DESIGNED: CKD
 DRAWN: CKD
 TRACED: CKD

INTEGRAL CONC. CURB
 Hatched area paid for as Integral Concrete Curb (1/4 kernl. bar included in cost of curb)
 No Scale

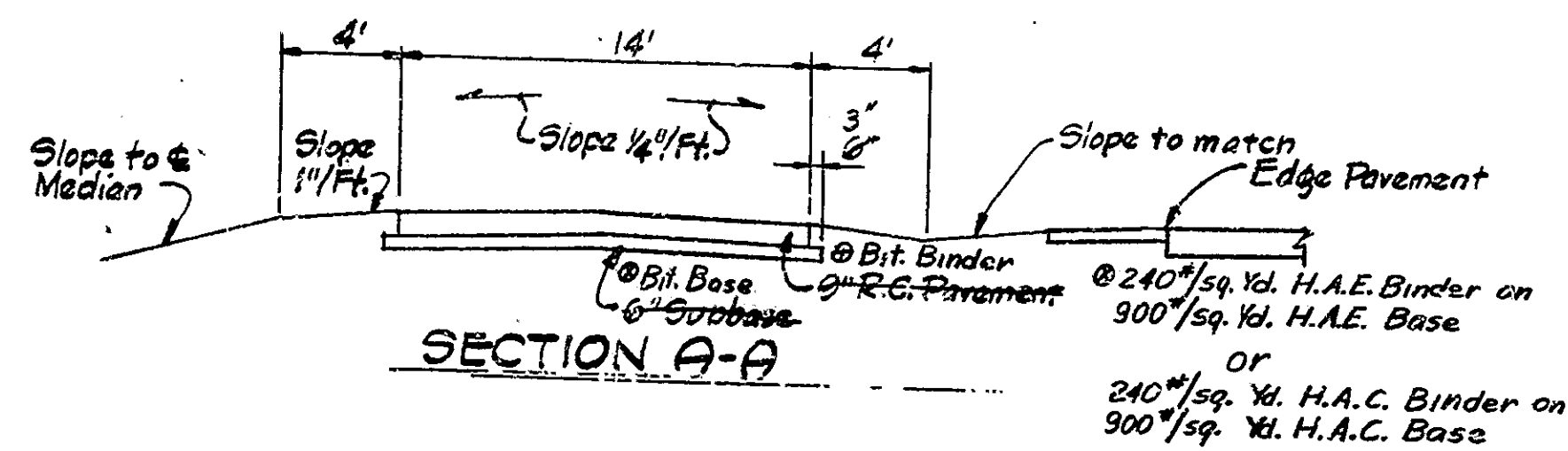
BRIDGES OVER 20' SPAN					
PROJ. ROAD DIST. NO.	STATE	PROJECT NO.	FISCAL YEAR	SHEET NO.	TOTAL SHEETS
4	IND.		1972	5	16



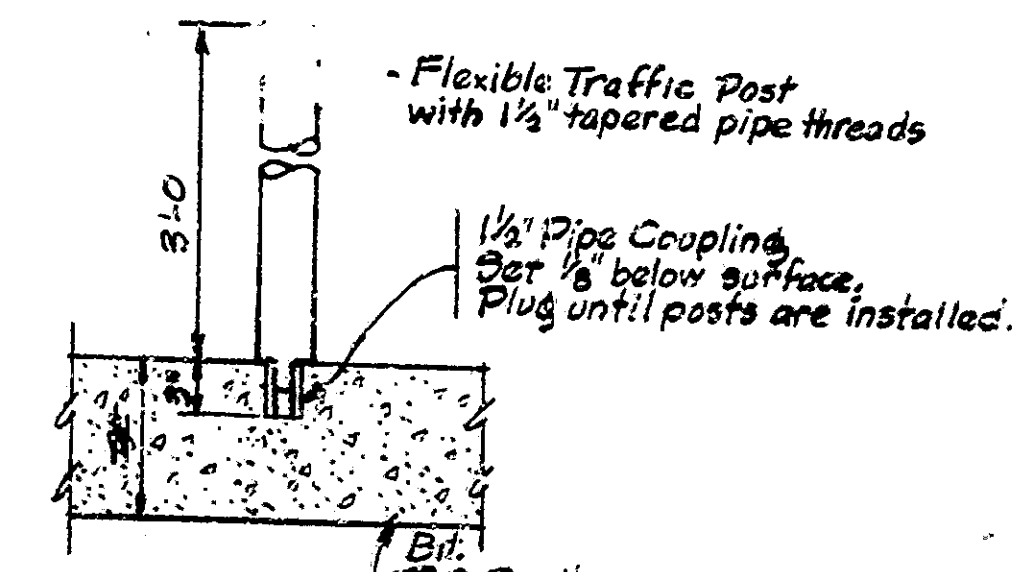
* Location of Flexible Traffic Post Assemblies (16 req'd. per crossover)

PLAN

STRUCTURE: 30 Lin. Ft. F.B.C. 15" C.S. Pipe 16 Ga. & 2-15" Pipe End Sections.
 Note: Structure may be eliminated if directed by the Engineer.

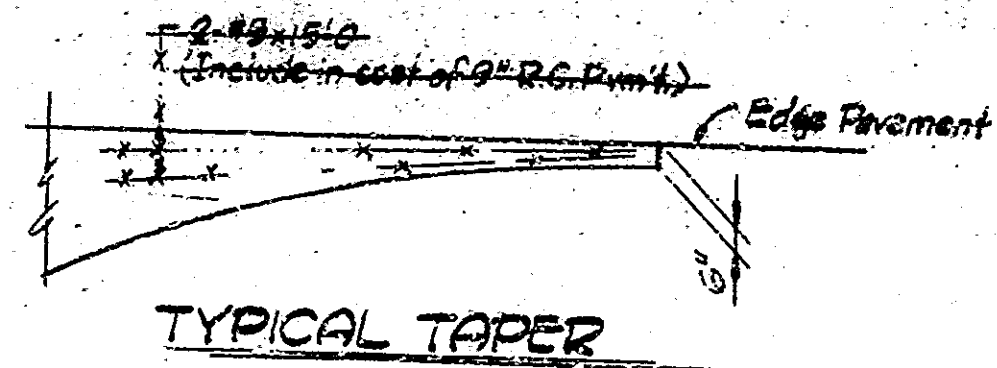


SECTION A-A

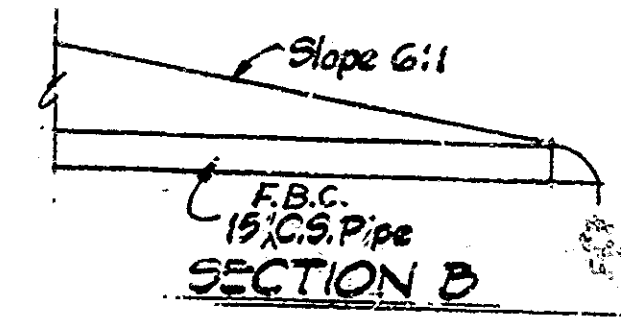


FLEXIBLE TRAFFIC POST ASSEMBLY

Note: An alternate approved method of removable post attachment may be used.



TYPICAL TAPER



SECTION B

SUMMARY FOR TWO CROSSOVERS

Description	Unit	Quantity
Maintaining Traffic	L.S.	1
9" R.C. Pavement	Cys.	730
Subbase	Cys.	130
Contraction Joints Type D	Lin. Ft.	164
Construction Signs Type A	Each	12
Construction Signs Type B	Each	16
Temporary Pavement Marking Tape	Lin. Ft.	8000
Flexible Traffic Post	Each	32
Borrow	Cys.	600
Common Excavation	Cys.	60
Mulched Seeding	Sq. Yd.	2600
15" C.S. Pipe 16 Ga.	Lin. Ft.	160
15" Pipe End Sections	Each	4

ESTIMATE OF QUANTITIES

Description	Unit	Quantity
Concrete Class A in Superstructure	CYS.	31.1
Concrete Class A in Substructure	CYS.	19.2
Concrete Railing	CYS.	3.4
Reinforcing Steel	LBS.	11,317
Rolling Reset	L.F.T.	27.5
Removal of Present Structure (Portion)	L.SUM	1
Common Excavation	CYS.	30
Borrow	CYS.	400
B Borrow	CYS.	16
Concrete Pavement Reinforced (10")	SYS.	53
Bituminous Binder	TONS	45.7
Bituminous Base	TONS	145
Bituminous Surface	TONS	88
Mulched Seeding	SYS.	1,560
Maintaining Traffic	L.SUM	1
Removal of Pavement	SYS.	80
Pipe: 16 Ga. F.B.C.C.S. (15")	L.F.T.	148
Construction Signs (Type A)	EACH	21
Construction Signs (Type B)	EACH	13
Temporary Pavement Marking Tape	L.F.T.	3,400
Pipe End Section (15")	EACH	4
Integral Concrete Curb	L.F.T.	12
Flexible Traffic Post	EACH	16
Type B Expansion Joint	L.F.T.	163

NOTE:
 Details and quantities shown in the Summary are for 2-Crossovers using R.C. Pavement. Only one-half crossover east and one-half crossover west of the existing structures shall be constructed at locations determined by the Engineer using a bituminous pavement section. Words and dimensions crossed out and insertions made indicate changes in details and materials required for this Contract.

CROSSOVER DETAILS MISCELLANEOUS DETAILS & ESTIMATE OF QUANTITIES

INDIANA STATE HIGHWAY COMMISSION

SCALE: NONE
 DATE: JUNE 20, 1972
 RECOMMENDED FOR APPROVAL: [Signature]
 DRAWING: R5 OF 5
 PROJECT:
 CONTRACT NO. M 9115
 BRIDGE FILE: I-70-7-5039A

DESIGNED: W.B. CKD
 DRAWN: D.B. CKD
 TRACED: CKD

